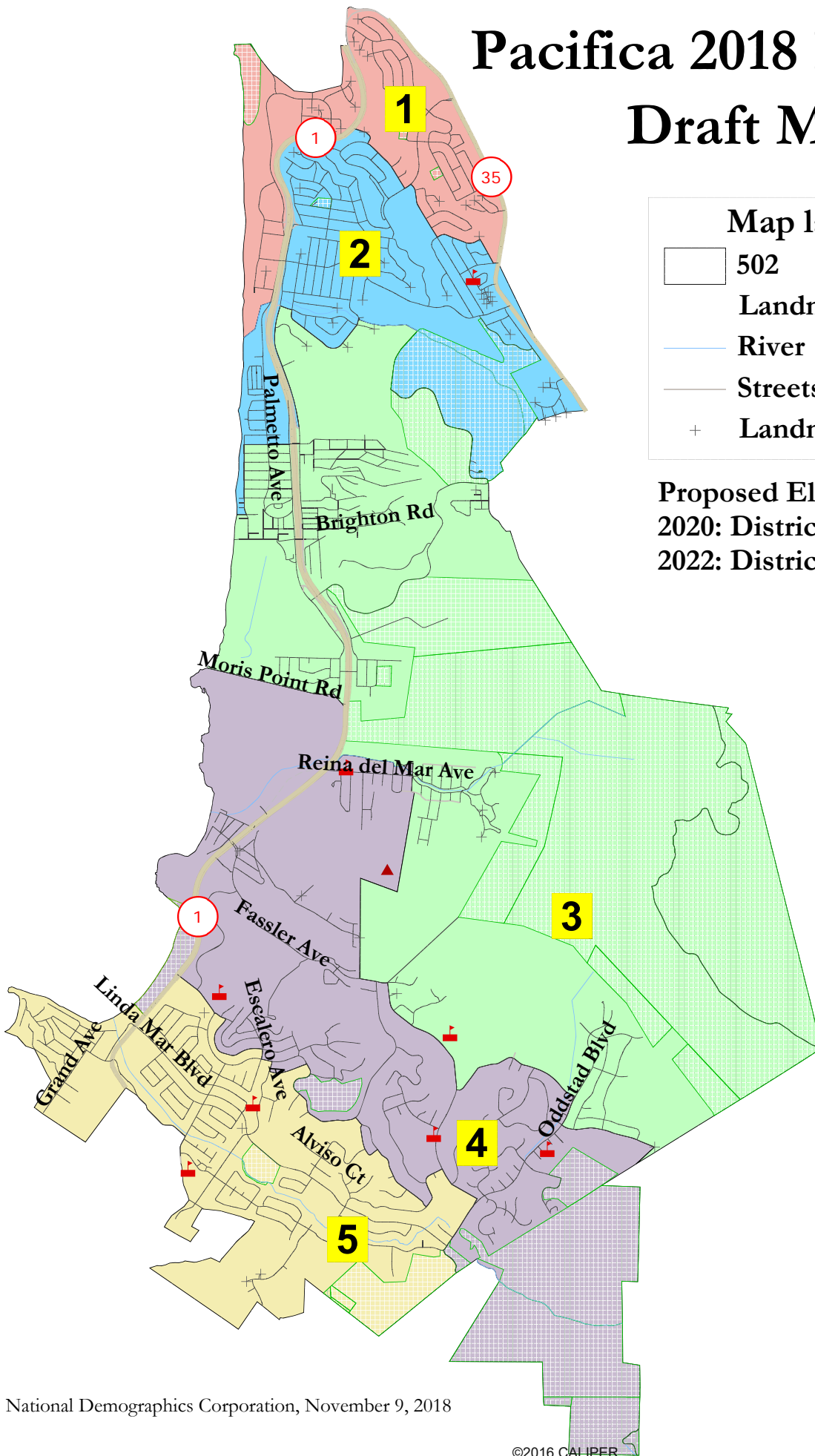


# Pacifica 2018 Districting Draft Map 502

**Map layers**

- 502
- Landmark Area
- River
- Streets
- Landmark Point

**Proposed Election Sequence:**  
2020: Districts 2 and 4  
2022: Districts 1, 3 and 5



## City of Pacifica - Draft Map 502

District		1	2	3	4	5	Total	
Ideal	Total Pop	7,316	7,301	7,573	7,530	7,514	37,234	
7,447	Deviation from ideal	-131	-146	126	83	67	272	
	% Deviation	-1.76%	-1.96%	1.69%	1.11%	0.90%	3.65%	
Total Pop	% Hisp	19%	19%	16%	16%	15%	17%	
	% NH White	30%	42%	67%	66%	71%	56%	
	% NH Black	6%	4%	2%	2%	1%	3%	
	% Asian-American	41%	32%	13%	13%	9%	22%	
Citizen Voting Age Pop	Total	5,384	5,694	5,767	6,447	5,613	28,905	
	% Hisp	16%	20%	13%	11%	16%	15%	
	% NH White	30%	48%	72%	71%	70%	59%	
	% NH Black	7%	4%	2%	1%	1%	3%	
	% Asian/Pac.Isl.	46%	26%	11%	17%	10%	22%	
Voter Registration (Nov 2016)	Total	3,819	4,417	5,367	5,484	5,248	24,335	
	% Latino est.	25%	21%	12%	13%	12%	16%	
	% Spanish-Surnamed	22%	18%	11%	11%	11%	14%	
	% Asian-Surnamed	9%	10%	4%	4%	3%	6%	
	% Filipino-Surnamed	8%	5%	2%	2%	1%	3%	
	% NH White est.	47%	60%	80%	79%	82%	71%	
Voter Turnout (Nov 2016)	Total	2,935	3,563	4,518	4,597	4,366	19,979	
	% Latino est.	24%	20%	12%	12%	12%	15%	
	% Spanish-Surnamed	21%	18%	10%	11%	11%	14%	
	% Asian-Surnamed	8%	9%	4%	4%	4%	6%	
	% Filipino-Surnamed	8%	5%	2%	2%	1%	3%	
	% NH White est.	48%	61%	81%	80%	82%	73%	
Voter Turnout (Nov 2014)	Total	1,235	1,860	2,660	2,705	2,613	11,073	
	% Latino est.	19%	15%	9%	10%	10%	12%	
	% Spanish-Surnamed	17%	14%	8%	9%	9%	10%	
	% Asian-Surnamed	8%	7%	3%	3%	3%	4%	
	% Filipino-Surnamed	8%	3%	1%	2%	1%	2%	
	% NH White est.	54%	71%	85%	83%	84%	78%	
ACS Pop. Est.	Total	7,548	7,516	8,087	8,096	7,538	38,785	
	Age	age0-19	22%	22%	23%	25%	24%	23%
		age20-60	59%	60%	55%	51%	54%	56%
		age60plus	19%	18%	22%	24%	22%	21%
	Immigration	immigrants	29%	26%	18%	16%	12%	20%
		naturalized	75%	70%	72%	78%	82%	75%
Language spoken at home	english	59%	65%	78%	81%	87%	74%	
	spanish	15%	13%	9%	7%	6%	10%	
	asian-lang	24%	20%	7%	8%	5%	13%	
	other lang	3%	3%	6%	4%	2%	4%	
Language Fluency	Speaks Eng. "Less than Very Well"	13%	11%	6%	6%	4%	8%	
Education (among those age 25+)	hs-grad	49%	49%	51%	53%	54%	51%	
	bachelor	31%	32%	25%	27%	26%	28%	
	graduatedegree	13%	13%	18%	15%	16%	15%	
Child in Household	child-under18	28%	28%	28%	30%	30%	29%	
Pct of Pop. Age 16+	employed	68%	69%	66%	64%	66%	67%	
Household Income	income 0-25k	10%	10%	12%	10%	7%	10%	
	income 25-50k	12%	13%	16%	14%	14%	14%	
	income 50-75k	13%	13%	13%	13%	13%	13%	
	income 75-200k	52%	52%	44%	46%	48%	48%	
	income 200k-plus	13%	12%	15%	19%	17%	15%	
Housing Stats	single family	72%	68%	73%	88%	92%	79%	
	multi-family	28%	32%	27%	12%	8%	21%	
	rented	35%	41%	38%	24%	23%	32%	
	owned	65%	59%	62%	76%	77%	68%	

Total population data from the 2010 Decennial Census.

Surname-based Voter Registration and Turnout data from the California Statewide Database.

Latino voter registration and turnout data are Spanish-surname counts adjusted using Census Population Department undercount estimates. NH White and NH Black registration and turnout counts estimated by NDC. Citizen Voting Age Pop., Age, Immigration, and other demographics from the 2012-2016 American Community Survey and Special Tabulation 5-year data.